

APACHE by **ET**
SPRAYERS



2022 APACHE SPRAYERS

TABLE OF CONTENTS

- 2 Introduction
- 3 Why Apache?
- 4 New Models
- 5 Large Capacity Sprayers
- 6 The Power-To-The-Ground™ Difference
- 7 2022 Enhancements
- 8 Our History
- 10 Precision Packages
- 12 Boom Options
- 13 Customization Options
- 14 Model Specifications
- 15 Tire Options
- 16 About ET

DEAR READER,

It is hard for me to put into words what makes our company such a special one, but it is so important for you to understand who we really are that I must try. It is what I call the “soul” of ET. Who is that soul? At the core, it is a cast of pretty unconventional and diverse characters who take our obligation to make sure the customer has a wonderful experience with our product as one of the most serious commitments in our lives – both personal and professional. Think of it as really practicing the Golden Rule. We are focused and have a low tolerance for nonsense (think anything that does not improve customer experience). We take immense pride in the products and services that we offer and it shows. We strive to please our employees by offering them a supportive, professional work environment in which they can grow, thrive and maybe even have some fun. Unlike most businesses, our employees can make mistakes without fear of being fired which means that they are willing to take risks and to make decisions on their own. If you see something wrong, fix it. If you know how to help a customer, do it. If you have an idea for improvement, make it happen. Performance leads to confidence, more confidence means even better performance. It’s a beautiful loop. I guess you can think of it as an intense desire to be excellent at what we do.



I hope I have done some justice in describing our culture with just a few sentences. I think the customer and employee excerpts in this literature will say it better. All together, we hope that it will give you a good feel for what we are all about and what has been one of the main drivers of our success the past twenty-five years (no small feat for a manufacturer of large self- propelled sprayers competing against “the big boys”. We are not just competing, we are thriving!).

Thanks to all in our ecosystem – employees, dealers, customers, suppliers, families and friends. We feel lucky to be part of this special experience.

Matthew F. Hays
CHIEF EXECUTIVE OFFICER



WHY APACHE?

Power, performance, and value—that is what you can expect when you spray with Apache. This year we’re proud to celebrate 25 years of providing premium performance and unbeatable value to our customers. From our leading 5-year warranty, to being the only 4-time winner of the “Highest Retained Value” award by EquipmentWatch™ across all equipment and Ag categories – not just sprayers.

Don’t just take our word for it, Apache customers say it best:

WARRANTY

Every sprayer that rolls off the assembly line includes a five-year limited warranty—the best in the industry. We are the only manufacturer with full machine coverage for the first two years (<1,000 hours); some exclusions apply.

Years 1-2: Limited warranty covers the total machine—parts and labor—for two years from the warranty start date or 1,000 hours, whichever comes first.

Years 3-5: Limited warranty covers powertrain and chassis components for parts only for years three to five from the warranty start date or 2,000 hours, whichever comes first.

Engine Warranty: The limited engine warranty is covered by Cummins Inc. for two years from the warranty start date or 2,000 hours, whichever comes first.



“The Apache is my first self-propelled sprayer, and as a first-generation farmer, it was a big step to upgrade from a pull-behind. Not only has my Apache paid for itself, but the fact that I still own the machine today after 7 years says a lot about the value- It is light and nimble and the structure is sound. It’s been a really good machine.”

— Eric Orem, 1st Generation Wheat Farmer

NEW MODELS



The Apache AS650 is the lightest, most affordable self-propelled sprayer in the industry. It's built for the producer who wants to upgrade from a pull-behind to a self-propelled, or for the larger producer that needs an additional agile sprayer.

Tank Capacity: 650 gal
Weight: 16,900 lbs
Crop Clearance: 42" or 48" based on tire selection
Engine: Cummins Tier 4 Final, 163 hp (rated)

“We are 4th generation farmers out of south-central Illinois, and we farm around 6,000 acres of soybean and corn. Being able to cover a massive amount of acres in a day is so critical. Having a sprayer that is dependable, and has a large capacity, like the one we have with Apache is not just efficient, but necessary if you are going to be a top producer.”

— Brad Damery, 4th Generation Farmer

AS650



Featuring an 800-gallon tank, the AS850 can work in challenging field conditions that competitive sprayers can't, and is perfect for the farmer looking for do-it-yourself control.

Tank Capacity: 800 gal
Weight: 18,400 lbs
Crop Clearance: 42" with JCB planetary final drive or 50" with 18" drop box all-gear final drives
Engine: Cummins Performance Series V, 200 hp (rated)

AS850



With a 1,000-gallon capacity tank, the versatile Apache AS1050 is the most popular model in the lineup, and includes boom and precision options to fit any operation. The product tank is large enough to cover acres, yet light enough to spray in challenging conditions.

Tank Capacity: 1,000 gal
Weight: 20,200 lbs
Crop Clearance: 42" with JCB planetary final drive or 50" with 18" drop box all-gear final drives
Engine: Cummins Performance Series V, 225 hp (rated)

AS1050

LARGE CAPACITY SPRAYERS



The Apache AS1250 and AS1250XP are the largest sprayers in the AS family, yet they weigh far less than the competition. The XP model features added horsepower and is adaptable to ensure it meets all of your spraying needs.

Tank Capacity: 1,200 gal
Weight: 21,200 lbs
Crop Clearance: 50" with 18" drop box all-gear final drives.
Engine: Cummins Performance Series V, 260 hp (rated)
Cummins Performance Series V, 300 hp (rated)
Optional: Stainless steel tank

AS1250/AS1250XP

“We have enjoyed the ease at which the hydraulics lift the HS1100 to the right clearance to apply fungicides to our tasseled corn, while keeping its quality of ride. The 4-wheel steer has been a tremendous asset, minimizing our crop damage while making many trips across fields.”

— Eric Ebelhar, Pasture Belt Farms, Owensboro, KY



HS1100

Engineered for those seeking performance, maximum crop clearance, ease of use, and flexibility—all with an industry-leading 5-year warranty. The all-new HS 1100 high clearance sprayer is equipped with a 60"-70" crop clearance that adjusts hydraulically on the go.

Tank Capacity: 1,120 gal
Weight: 28,225 lbs

- Crop clearance that can be adjusted from 60" to 70"
- 4-Wheel and Crab Steering
- Raven and CapstanAG Precision Options
- Front fill for product and rinse tank
- Custom pressurized cab with easy to use controls and vision

Transportation width and height: 144"
Overall length: 384"
Engine: Cummins 6.7L 300 hp (rated)

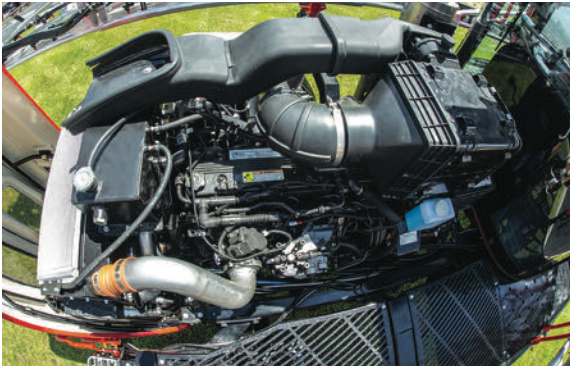
POWER-TO-THE-GROUND™

“We are at the foothills of Blue Mountain with rolling hills and some pretty steep ground. At first, I was concerned about getting around on the steep terrain because my friends have had some issues with their competitor machines. But I’ve had no issues, and my friends are pretty impressed with where my Apache can go and how I can get around on the mountainside with that machine!”

— Eric Orem, 1st Generation Wheat Farmer

Apache’s patented POWER-TO-THE-GROUND™ technology delivers more horsepower where and when you need it most. Featured exclusively in our mechanical-driven AS series sprayers, PTG™ technology delivers a full 90 percent of horsepower transferred to the ground, compared to 70 percent from competing sprayers.

Plus the award-winning AS series provides farmers with unmatched traction and less-soil compaction, without the heavy 4-wheel drive machinery. And thanks to the Apache SMART FLEX-FRAME construction all four wheels maintain constant contact with the ground and the lock-up torque converter & limited-slip differential ensures that the wheels continue turning in the toughest field conditions.



STAGE V PERFORMANCE SERIES ENGINE

Featured on select AS Series Sprayers, the Cummins Stage V Performance Series engine improves performance by up to 15%*. A fuel economy improvement of 8% and longer maintenance intervals help reduce the cost of operation and lower the overall Total Cost of Ownership.

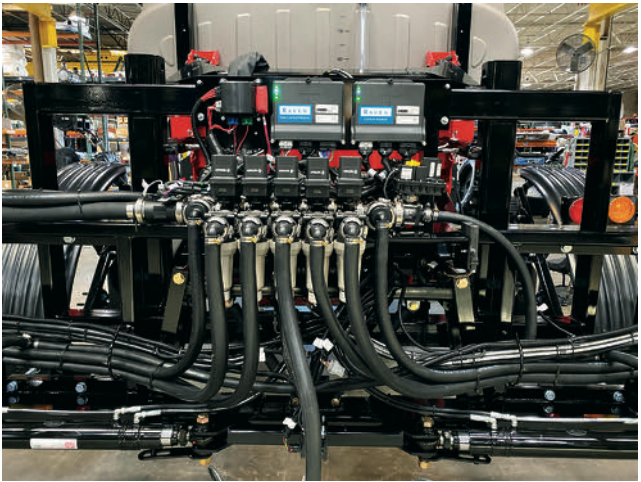
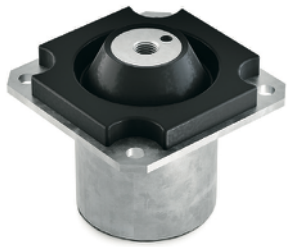
*Performance increased by 15% for the AS850 model.

ENHANCEMENTS

UPGRADES TO AS MACHINES

IMPROVED OPERATOR RIDE

Enjoy a more comfortable ride. Our fluid-elastic active “Hydrocone” cab isolators from AMC Mecanocaucho improve the ride as much as 50% by better absorbing shock and displacement of the chassis.



EASE OF STEERING

Our new variable displacement load-sense piston pump provides the right amount of hydraulic flow at all speeds while reducing steering effort by as much as 20% for ease of steering at headlands, hills and tight corners.



BOOM RECIRCULATION

Helps in priming the boom before spraying, ensuring a precise and uniform spray pattern. It also reduces and/or eliminates product settling in boom pipes, enables accessible and complete cleanout of the booms, detects spray mode vs. recirculation mode automatically, and works with different precision options such as individual nozzle control, section control, etc. with built-in low-flow alert.

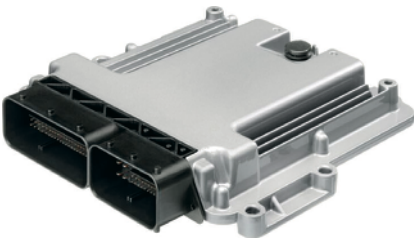
HS1100 UPGRADES



NEW CENTER CONSOLE

The new modern operator interface is designed with the best ergonomic comfort in mind by utilizing the common joystick, display, digital keypad and buttons offering similar style and ease of operation of proven Apache models.

The streamlined control system for HS1100 brings together the proven Bosch hydrostatic controllers with Apache-proven ACTIA and Raven boom control system components for superior control of drive train, boom and auxiliary functions for ease of operation and in-field service.





1997
AS560

OUR HISTORY



“I could write a small book about all of the Apache advantages that make it a world-class organization. I have been in the application industry for the past 31 years, and the last 19 years with High Plains Apache Sales and Service. It is the easiest, simplest sprayer to support, with the happiest customers at the end of the day—that makes it pretty easy to go to work with a smile.”

— Jay Nelson, Operations Manager

“I have loved working at Apache because everyone works hard to make a great product, a terrific customer experience, and a true partnership with our dealer network. Leadership has managed to maintain a small company feel while consistently and strategically growing our business. We have a goal, and we know our role!”

— Michelle Rooker, Product Support Group



2021
AS1250XP

1997

ET is founded and the first Apache Sprayer is built. That very same Apache 560 is still in operation today.

2000

Introduction to the Apache Plus, the first 6-speed sprayer model with a gear dropbox.

2005

Launch of the AS Series, a complete redesign of the Apache.

2009

Addition of standard hydraulic-assisted brakes and expanded axle options.

2011

Introduction of 20 Series Apache Sprayer, with updated cab, body style, and increased efficiency.

2013

ET expands campus with purchase of 110 additional acres and build of Ag Center.

2016

ET acquired by Exel Industries.

2017

ET introduces AS650 (650 gallon sprayer).

2018

ET builds first HS 1100 clearance, hydraulic in Mooresville sprayer called Bruin and the all new 650 gallon sprayer called the AS640 Apache.

2020

4-time winner of the “Highest Retained Value” award by EquipmentWatch™ across all equipment and ag categories.

2021

ET builds first HS 1100 high-clearance, Hydrostatic drive sprayer in Mooresville and launches the 50 series Apache Sprayers with front entry.

ET re-brands Bruin to Apache HS 1100, begins production localization.

PRECISION PACKAGES

IN-CAB SUPPORT



VIPER® 4+

Viper 4+ integrates with Raven's full line of products into one networked platform that offers a capacitive touchscreen and an intuitive, tablet-style interface with swiping features and horizontal or vertical orientation. Easy job set-up, fewer touches, and greater efficiency allow for extraordinary data management capabilities.

ADVANCED STEERING



RS1™

RS1 is Raven's fully scalable GPS solution that combines autosteer, GPS, and Slingshot® into one intuitive, easy-to-use unit. Incredible accuracy at both high and low speeds with quick line acquire improves efficiency and gives you the power to cover more acres in a day.

BOOM



AUTOBOOM XRT®

Raven's latest advancement in boom control. The new radar sensor technology uses simultaneous ground and canopy detection to maintain optimal spray height for maximum product efficacy. Pressure-based control allows for smooth movement and quicker reaction time, while center rack stability technology with optional dampers gives the operator complete control, maximizing boom life.

NOZZLE CONTROL SYSTEM

HAWKEYE 2®

Precision and durability like never before. This pressure-based product control system from Raven allows for exact sprayer application in a variety of conditions, reducing spray drift and getting the most out of every nozzle. Each nozzle is controlled by its own individual pulsing valve, giving you a consistent spray pattern as speed and conditions change.

CAPSTANAG PINPOINT III ENVELOP

The precision application system utilizes enhanced Blended Pulse PWM technology along with Predictive Rate and Flow Control to lock on to target under the most challenging field conditions and machine configurations. Using Sensor Fusion Technology, PinPoint III ENVELOP utilizes multiple sensor data points for the fastest and most reliable control fully integrated with your VT display.

CAPSTANAG EVO

CapstanAG EVO system is based on the standard PWM based nozzle control technology for best-in-class precision application.

SIDEKICK CHEMICAL INJECTION (AVAILABLE ON AS SERIES)

No tank mixing required and with the industry's first automatic calibration feature, you are ready to go in minutes. This simple system boasts greater precision, higher yields and unrivaled efficiency. Raven's Sidekick Pro direct injection systems help you save time and money on applications of herbicides, insecticides, drift agents and nitrogen stabilizers.



BOOM OPTIONS

We offer a stronger, more flexible, exceptionally protected and lower-maintenance boom package than the competition. The increased cushioning on the boom rack minimizes wear and tear. Boom wings break away when coming into contact with trees and other immovable objects, and spring back into place when the obstacle has passed. A common boom manifold allows for upgrades.



POMMIER BOOMS (ALUMINUM)

- **SECTION CONFIGURATION** 9
- **NOZZLE SPACING** 15" or 20"
- **NOZZLE BODIES** 3-way
- **LENGTH**
AS SERIES: 100'
AS SERIES & HS SERIES: 120'
AS SERIES & HS SERIES: 132' (20" Nozzle Spacing Only)

Fence-row nozzles available on one side or both.

ET CUSTOM BOOMS (STEEL)

AS SERIES

- **SECTION CONFIGURATION** 9
- **NOZZLE SPACING** 15" or 20"
- **NOZZLE BODIES** 3-way
- **LENGTH** 90' 100' 60'/90'

Fence-row nozzles available on one side or both.

OPTIONS

Our sprayers are reliable for many reasons, one being our lean manufacturing to build sprayers exactly the way you want them. That means we don't force you to pay for the things you don't want or need. Our "a la carte" menu gives you the freedom to choose upgrades, so your sprayer is customized for you and your operational needs.

OPTIONS FOR BOTH HS AND AS SERIES



FENCE-ROW NOZZLES

These added nozzles are great for keeping fence lines and outer edges of fields clean. The extra nozzle can be added to the left or right side of the boom, or both.



3-INCH PRODUCT FILL

Fill up faster thanks to the upgraded 3-inch diameter product fill connection. You'd be surprised how much of a difference the additional 1-inch will make.

STANDARD ON HS SERIES, OPTIONAL FOR AS SERIES



FENDERS (AVAILABLE ON BOTH THE FRONT AND REAR AXLES)

If you want mud splash-back protection, fenders are a great option to help keep things clean and prevent dust and mud clogs. Available in the front, rear, or a combination of each.



ENHANCED LIGHTING PACKAGE

Our optional LED lighting package produces more light, while consuming less energy. This lighting package features 64 LED bulbs, located above the grille and cab and next to the fill station. The lights are situated to reduce bounceback reflection. LED bulbs have an average lifespan of tens of thousands of hours.

AS SERIES OPTIONS



POWER MIRROR (AS850, AS1050, AS1250, AND AS1250XP)

Operators have the option of adjusting the single power side mirror attached to the cab from within the cab. Available on the AS850, AS1050, AS1250, and AS1250XP models.



EXTRA POWER WITH XP (AS1250)

The XP package from Apache Sprayers provides the perfect combination of power, traction and efficiency, along with the simplicity of a mechanical drive transmission.



PREMIUM CAB UPGRADE (AS650)

Our Premium Cab upgrade, exclusively for the AS650, includes heated and cool options for the leather seat, high output lighting, power mirrors, XM radio, and premium trim package inside the cab.



HYPRO® CLEANLOAD™

The Hypro Cleanload is a self contained eductor system that allows operators to mix liquid and dry chemicals safely and quickly.



STAINLESS STEEL

The 1200-gallon stainless steel product tank features a redesigned baffle, tank agitation, tank rinse, sump, sight gauge, and tank mounts.

MODEL SPECIFICATIONS

	 AS650	 AS850	 AS1050	 AS1250/AS1250XP	 HS1100
PRODUCT TANK CAPACITY	650 gal	800 gal	1,000 gal	1,200 gal	1,120 gal
WEIGHT (APPROXIMATE DRY WEIGHT)	16,900 lbs	18,400 lbs	20,200 lbs	21,200 lbs	28,225 lbs
AXLE WIDTH	88", 90", 108" 114" or 120" fixed	120" fixed or 120"-160" hydraulic adjustable (optional with 50" crop clearance only)	120" fixed or 120"-160" hydraulic adjustable (optional with 50" crop clearance only)	120" fixed or 120"-160" hydraulic adjustable	120" - 160" hydraulic adjustable
TURNING RADIUS	17' 2"	20'	20'	20'	24' (Two-wheel steer) 13' (Four-wheel steer)
WHEEL BASE	13' 8"	15'	15'	15'	14' 7"
FRONT TIRES (STANDARD)	Michelin 380/85R34	Michelin 380/80R38	Michelin 380/80R38	Michelin 380/80R38	Michelin 380/90R46
REAR TIRES (STANDARD)	Michelin 380/80R38	Michelin 380/90R46	Michelin 380/90R46	Michelin 380/90R46	Michelin 380/90R46
CROP CLEARANCE	42" or 48" depending on tire selection	42" standard or 50" optional	42" standard or 50" optional	50"	60"-70" hydraulic adjustable
BOOMS	90', 60/90' steel or Pommier 100' aluminum	90', 60/90', 100' steel or Pommier 100', 120', or 132' aluminum	90', 60/90', 100' steel or Pommier 100', 120', or 132' aluminum	90', 60/90', 100' steel or Pommier 100', 120', or 132' aluminum	Pommier 100', 120', or 132' aluminum
RINSE TANK	50 gal	100 gal	100 gal	100 gal	110 gal
RATED HORSEPOWER	163HP	200HP	225HP	260HP or 300HP optional	300HP
DRIVELINE EFFICIENCY	90%	90%	90%	90%	75%
PTG:HP PER 1,000LBS	8.7	8.9	10	11 (12.7 with 300HP)	8
FUEL TANK CAPACITY	80 gal	90 gal	90 gal	90 gal	100 gal
DEF TANK	5 gal	10 gal	10 gal	10 gal	10 gal
SUSPENSION	Active airbag w/independent front suspension	Patented independent hydraulic	Patented independent hydraulic	Patented independent hydraulic	Four-wheel independent pneumatic suspension
BRAKES	Fully enclosed, self-adjusting, internal wet disc brakes	Fully enclosed, self-adjusting, internal wet disc brakes	Fully enclosed, self-adjusting, internal wet disc brakes	Fully enclosed, self-adjusting, internal wet disc brakes	Hydraulic brakes
TRANSMISSION	JCB powershift 4-speed	JCB powershift 4-speed	ZF power shift 6 speed	ZF power shift 6 speed	Rexroth hydrostatic
ENGINE	Cummins T4F	Cummins Performance Series V	Cummins Performance Series V	Cummins Performance Series V	Cummins T4F
PRODUCT PUMP	Ace hydraulic driven centrifugal	Hypro hydraulic driven centrifugal	Hypro hydraulic driven centrifugal	Hypro hydraulic driven centrifugal	Hypro hydraulic driven centrifugal
STEERING	Two wheel	Two wheel	Two wheel	Two wheel	Two-wheel or Four-wheel with crab steering
TRANSPORTATION WIDTH AND HEIGHT	144" Maximum	144" Maximum	144" Maximum	144" Maximum	144" Maximum
OVERALL LENGTH	290" Minimum	290" Minimum	290" Minimum	290" Minimum	372" Maximum
CAB	ET custom pressurized with state-of-the-art interior	ET custom pressurized with state-of-the-art interior	ET custom pressurized with state-of-the-art interior	ET custom pressurized with state-of-the-art interior	Siac custom pressurized with great visibility
PRECISION APPLICATION EQUIPMENT	Raven Viper 4+, Hawkeye, Accuboom, XRT, RS1 steering, Capstan Pinpoint III, and EVO	Raven Viper 4+, Hawkeye, Accuboom, XRT, RS1 steering, Capstan Pinpoint III, and EVO	Raven Viper 4+, Hawkeye, Accuboom, XRT, RS1 steering, Capstan Pinpoint III, and EVO	Raven Viper 4+, Hawkeye, Accuboom, XRT, RS1 steering, Capstan Pinpoint III, and EVO	Raven Viper 4+, Hawkeye, Accuboom, XRT, RS1 steering, Capstan Pinpoint III, and EVO

TIRE OPTIONS

Michelin® Spraybib Tires come standard on all AS Series and HS Series models. Every tire used by Apache is inspected upon assembly to ensure that farmers enjoy a long service life. All Michelin Spraybib Tires feature exceptional load capacity, unmatched driver comfort and are rated for speeds up to 40 mph. The longer footprint allows for reduced soil rutting and optimized yields, while the reinforced tread design stretches the service life and increases stubble resistance.



AS650

OPTION	TYPE	SIZE	WIDTH	SERIES	MANUFACTURER
Front	Standard	380/85R34	15"	AGRIBIB	MICHELIN
Front	Optional	380/80R38	15"	AGRIBIB	MICHELIN
Front	Narrow	320/85R38	12.6"	DT800	GOODYEAR®
Rear	Standard	380/80R38	15"	AGRIBIB	MICHELIN
Rear	Optional	380/90R46	15"	SPRAYBIB	MICHELIN
Rear	Narrow	320/90R50	12.6"	ULTRA SPRAYER	GOODYEAR
Rear	Flotation	620/70R42	24.4"	MEGAXBIB	MICHELIN
Rear	Flotation	800/65R32	31.5"	MEGAXBIB	MICHELIN

Standard tires adjust crop clearance to 42". Optional tires (Front: 380/80R38, Rear: 380/90R46) adjust crop clearance to 48".

AS850, AS1050, AS1250

OPTION	TYPE	SIZE	WIDTH	SERIES	MANUFACTURER
Front	Standard	380/80R38	15"	AGRIBIB	MICHELIN
Front	Narrow	320/85R38	12.6"	DT800	GOODYEAR
Rear	Standard	380/90R46	15"	SPRAYBIB	MICHELIN
Rear	Narrow	320/90R50	12.6"	ULTRA SPRAYER	GOODYEAR
Rear	Flotation	620/70R42	24.4"	MEGAXBIB	MICHELIN
Rear	Flotation	800/65R32	31.5"	MEGAXBIB	MICHELIN
Rear Dual	Standard	380/90R46	15"	SPRAYBIB	MICHELIN
Rear Dual	Narrow	320/90R50	12.6"	ULTRA SPRAYER	GOODYEAR

All brand or product names are or may be trademarks of, and are used to identify products and services of their respective owners or its subsidiaries and divisions in the U.S. and/or other countries. All specifications are subject to change without notice.

HS1100

OPTION	TYPE	SIZE	WIDTH	SERIES	MANUFACTURER
Front & Rear	Standard	380/90R46	15"	SPRAYBIB	MICHELIN
Front & Rear	Standard	710/60R42	28"	XEOBIB	MICHELIN



ABOUT ET

Apache Sprayers' parent company, Equipment Technologies, was founded in 1997, with one goal in mind: build the best and most reliable agricultural sprayers. While other ag equipment manufacturers attempt to produce everything from combines to sprayers to lawn mowers, we have stayed true to our vision since the beginning. We focus all of our resources on creating the best ag sprayers in the industry and then we put all our cards on the table with the industry's best 5-year powertrain warranty.

2201 Hancel Pkwy.
Mooreville, IN 46158
877-398-6164
etsprayers.com



LIKE US ON FACEBOOK

[Facebook.com/ApacheSprayers](https://www.facebook.com/ApacheSprayers)



FOLLOW US ON TWITTER

[@ApacheSprayers](https://twitter.com/ApacheSprayers)



SUBSCRIBE TO OUR YOUTUBE CHANNEL

[YouTube.com/ApacheSprayers](https://www.youtube.com/ApacheSprayers)



FOLLOW US ON INSTAGRAM

[@ApacheSprayers](https://www.instagram.com/ApacheSprayers)



SUBSCRIBE TO OUR NEWSLETTER

etsprayers.com/newsletter-signup/

©2021 Equipment Technologies. Always refer to your owner's manual before operating any Apache Sprayer. Follow maintenance checklists, inspect the machine, and ensure it is operating properly before use. ET Works Inc. reserves the right to make any improvements or changes to specifications and design without advanced notice. All specifications, descriptions and illustrations are as accurate as known at time of publication, yet subject to change without notice and may vary according to the country in which the machine is used. Contact your nearest Apache Sprayer dealership for additional specifications as required. All rights reserved. Printed in the U.S.A.